

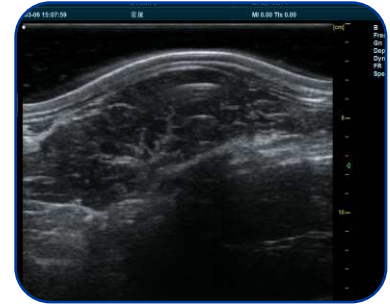
BXL-DB20 Technical Parameters



BXL-DB20 Back fat probe



OPU



Loin eye muscle

| | | | |
|-----------------------|---|-----------------------------------|---|
| Adaptation Conditions | Waterproof, dustproof, drop-resistant | Probe Element Count | 128 elements |
| Screen Size | ≥15-inch touchscreen | Resolution | 1920*1080 |
| Imaging Modes | Color Doppler imaging system, B, B/B, 4B, B/M (adjustable M-line position), M-mode, Tissue Harmonic Imaging (THI), Pulse Inversion Harmonic Imaging (iTHI), Tissue Specific Imaging (TSI), Convex Array Extended Imaging, Linear Array Steer/Trapezoid Imaging, Puncture Enhancement, Color Flow (CF), Power Doppler Imaging (PDI), Directional Power Doppler Imaging (DPDI), Pulsed Wave Doppler (PW), Continuous Wave Doppler High Pulse Repetition Frequency (CW, HPRF), B+CF Real-time Dual Imaging, Color M-mode, B+PW, B+CF/PDI/DPDI+PW, CW | | |
| System | Windows 10 | Image Relative Tilt Angle | Adjustable to 90 degrees, 180 degrees, 270 degrees |
| Scan Types | Normal, compound extended, etc. | Image Grayscale | 256 |
| Animal Body Markers | ≥24 types | Wireless Connectivity | Wireless image transmission to mobile devices, Bluetooth connection |
| Storage Function | Capable of storing images and videos | Measurement Calculation Package | Animal-specific measurement package |
| Gain | Overall Gain: Adjustable from 1 to 100; Near Field Gain: Adjustable from 0 to 40 Far Field Gain: Adjustable from 0 to 95 | | |
| Ear Tag Function | Capable of RFID electronic ear tag scanning | Power Supply | AC 220V +10%, 50Hz ±1 |
| Expansion Ports | Two USB ports, 720p HDMI port, video glasses port, charging port, HDMI, video output, USB port, RJ-45/DICOM port, supports inkjet, laser, and video printers | | |
| Scanning Depth | ≥30cm | Battery | 10000mAh |
| Software Language | Multiple languages available including English, Chinese, French, Spanish, etc. | Storage and Transport Environment | -20°C to +60°C |
| Optional Probes | BXL3.5L15A: 16cm backfat eye muscle dedicated probe BXL6.5L128A: Animal rectal probe BXL7.5MHZR15: 7.5MHz micro-convex probe BXL6.0MHZR15: 6.0MHz micro-convex probe BXL-P7-3/P10: Phased array probe BXL7.5MHzL40: 7.5MHz high-frequency linear array probe BXL3.5MHzC5-2/R60: 3.5MHz large convex probe | | |